

## Wildboar Clough



**Author, Marcia Thompson.**

### Contents

<u>Contents</u>	<u>Page</u>
Committee Members	15
Cycling Celebrations	7
Diaries	4
Ferry 'Cross The Mersey	3
Group News	11
Jacob's Ladder	8
Lost Invitation	5
Music & Theatre Programme	13
New Members	15
Outings Group Programme	13
Southport	2
RAF Woodvale	6
School of Tropical Medicine	9
Two Faiths	5

**Fellwalkers** had been warned by the leader, Peter Warren, that this was going to be a tough one - and it was, but we had lovely weather, great views and came back from Derbyshire without muddy boots - quite an achievement!

The walk started from the Car Park at Torside Reservoir and almost immediately we were going uphill on narrow heathery paths towards Wildboar Clough. The Clough itself was dry fortunately and we climbed up on rocks and stones, with a bit of hands-on stuff en route. When the rocks and stones turned into a Grade 3 Scramble, we avoided this and made our way up a steep and narrow path along the left of it. We looked down on a series of peaty pools in

which one of our members took an accidental and dramatic dip but it was a hot day, so he soldiered on, drying off slowly as the day progressed.

Our lunch stop was at the summit of Bleaklow - not a very impressive summit, but with magnificent views in every direction. After lunch we followed the Pennine Way to the Wern Stones and Hern Stones and stopped to see the wreckage of a WW2 American aeroplane which crashed on this hillside in 1948, killing all 13 crew. It was on its way to Burtonwood.

After the Stones, the original plan was to go out to Cock Hill, but the rough terrain meant we had taken longer than planned, so we detoured over to the Pennine Way and then the Longdendale Trail back to the car park.

Thanks to Peter for an interesting and challenging walk.



## Southport

*Author, Rob Dodd.*



**Local History Group 5** enjoyed a guided walk around Southport. Led by Tony Kletz, the gentle walk lasted nearly two hours taking in Lord Street and the Promenade. Tony was a fount of knowledge about the history, buildings, monuments and gardens

of Southport and regaled us with stories of its founders, famous visitors and celebrated locals. He also produced a wealth of photographs from bygone times and arranged tea and scones at a local cafe at the conclusion of the walk.

It's amazing how much we miss when we walk through places without looking up! Members were surprised at things they'd not seen even though they'd been visiting Southport for decades! Tony has also devised a "Changing Coastline" walk, concentrating on how the flora and fauna are affected by the tides and erosion and talks about the shipwrecks, shrimpers and oddities of the area such as the aerodrome on the sands and the lost railway line! Details of both of the above walks are available from the author.



## Ferry 'Cross The Mersey

**Author, Ann Cusack.**

There couldn't have been a better day for an **Outings Group** ferry trip across the Mersey. We all arrived in plenty of time to board the coach. There was a bit of a hitch as the Wheel at Liverpool Docks had developed a problem and was out of action. However Ann who always has a Plan B had made arrangements for us to have morning coffee and cake at the Crosby Marina. This proved to be an excellent idea as a coffee was just what most of us needed and the staff were very welcoming and attentive.

We arrived at the Mersey Ferry building in plenty of time and boarded easily. We managed to get seats in the bar nearest the entrance/exit where we could see everything





through the windows anyone who wanted could go outside to see the sights and benefit from the sea air. The journey started of course with Gerry Marsden's "Ferry 'Cross The Mersey" and there followed an interesting commentary on all the sights that can be seen from the boat much of which is very familiar to most of the group. The commentary drew attention to the Albert Dock and pointed out that it kick-started the renewed interest in Liverpool's wonderful architecture, with the Three Graces of the Royal Liver Building, the Cunard Building and the Port of Liverpool Building which make up one of the most famous waterfronts in the world, the two cathedrals, the Anglican Cathedral which is the largest in the U.K. and the fifth largest in the world, the Catholic Cathedral which opened in 1967, both connected of course by the very appropriately named Hope Street and many, many more well-known buildings. We passed a very interesting clock known as the Dockers' Clock which has six faces as ships would it to set the correct time, the Bidston Observatory built in 1866 when the expansion of Waterloo Dock forced Liverpool Observatory to relocate to Bidston Hill alongside Bidston Lighthouse and Wallasey Town Hall which was built back to front so that they could have the splendid view of the river. Soon, our destination came into view.



We were then taken to the Floral Hall where we were served with a splendid meal of fish and chips accompanied by some lovely music from Billy who was fund raising for a cancer charity. We were more than happy to donate as the music was excellent. We then had a couple of hours free time to look round before leaving.

A lovely, lovely day was had by all. Thank you Ann.

**U3A DIARIES 2020** should be available at our October and November coffee mornings and speaker events. These are £2.75 each. If you wish, you can reserve one by emailing: [secretary@formbyu3a.org.uk](mailto:secretary@formbyu3a.org.uk) (please indicate when you expect to collect your diary in your email).

## Two Faiths

*Author, Kathryn Halpin.*

### **Local History Group 9**

enjoyed a walking tour around Hope Street, one of the most important streets in our city.

We split into two groups, each with a very informative RIBA guide. We started at the beginning of Hope Street at Frederick Gibberd's Metropolitan Cathedral and



finished at the other end of Hope Street at Sir Giles Gilbert Scott's Anglican Cathedral. The tour guides provided an insight into how the buildings and spaces have influenced generations and told the tale of a street that has inspired creativity. There were references to the arts, education, music, politics and religion. We were very fortunate to be given access to the Liverpool Medical Institution, a grade II listed building, which traces its origins back to the founding of the Liverpool Medical Library in 1779 and is normally only open to the public on Heritage days. As our guides talked us through the history of the area there was a modern day atmosphere due to it being Graduation Day and students being about in their caps and gowns. Lunch followed in The Quarter, which is in Faulkner Street.

## Lost Invitation

*Author, Nic Dickson.*

Members of the **Cycling Group** were at the Liverpool Cruise Terminal on the recent visit of the

world's largest ocean liner, Cunard's Queen Mary 2. We had hoped to join the Captain for Cocktails and Canapes on the Bridge, but somehow the invitation must have got lost in the ether!



## RAF Woodvale



**Author, Barbara Gibbons.**

**Local History Group 6** travelled to Woodvale where we were met by Warrant Officer Neil Blair, the station adjutant. He welcomed us with coffee prior to an interesting power point presentation.

The fall of France and the Netherlands in World War 2 left the North West of England including Merseyside within reach of the Luftwaffe. A base was needed to help defend the area. The existing grass surface was not satisfactory for landing , so the MOD requisitioned a farm and a golf course for three concrete runways to be laid out in a triangular pattern. RAF squadrons were brought up from the South of England to 'rest' and re-equip for short periods during which time they tried to defend Merseyside (although the Liverpool blitz in May 1941 preceded the construction of the all weather airfield) .

Several Polish squadrons arrived operating Spitfire 11s & Vbs. Additional support units working in all three services also served there. Apparently living conditions were very Spartan! In 1944 a US bomber crashed in flames at Woodvale with the loss of 5 lives.

Post-War the airfield was re-opened in 1946, with the Royal Auxiliary AF moving there from Speke. From 1953 - 1958 the Temperature and Humidity flights (weather) operating Spitfires and Mosquitos were based there. In 1957 the Spitfire made its last operational flight to Biggin Hill. 500 vehicles were brought here for storage as the Cold War began.

The Station Commander is Wing Commander David Hooton RAF (a local Ainsdale man). He joined us and spoke about the relevance of Woodvale today as a training station. Liverpool University Air Squadron, and Manchester and Salford Air

Squadrons are based there. Local youngsters can start as a cadet aged 12 for the Woodvale ATC. The Police and Fire and Rescue services train there, and there are ten air-experience flights. There is an Aviation Ground School and Woodvale Aircraft Owners Ltd. who are well charged for their use of the facilities! The cadets hold parade nights, there is a model aircraft club and a Part-Time Volunteer Reserves. Carol Vorderman is a Group Captain in the Volunteer Force.



We were then able to walk across to the Traffic Control Tower from which we had an excellent view of all the many buildings on site, the hangars and the three airstrips. We watched as controllers communicated with pilots as planes took off and landed. Woodvale is a busy hub with possibly 400 flights a day.

As we drove away past the mascot Hunter Trainer by the front gate, we reflected on all the events and personal stories which have been played out at our local airfield.

## Cycling Celebrations

**Author, David Manning-Fox.**

July was a month of double celebration and achievement for the **Cycling Group**.

Firstly, twenty-eight members cycled out to the café at Primrose Hill Nurseries on Asmall Lane (between Halsall and Ormskirk) to enjoy coffee and cake. Nothing unusual there, you may think, but it's not every day that we celebrate a 90th birthday of one of our members. The lucky man was Keith Scott who has been a member for quite a number of years now – and has just treated himself to a new bike! He was bowled over by the surprise “do” – in fact he's still talking about it!





The second event was a feat of endurance by Pam Ashton who took part in the Jo Cox Way ride in memory of the MP who was murdered in June 2016. The ride took place over five days, covering the 280 miles from Jo's constituency of Batley & Spen to London's Bankside. Those of us who had spent long hours in the saddle accompanying her on training rides had every confidence that she would succeed and she raised over £1,000 in sponsorship for the Jo Cox Foundation!



Congratulations to both members!

## Jacob's Ladder



**Author, Marcia Thompson.**

The August walk for the **Fellwalkers** started in the pretty little village of Edale and was led by George and Joanne who, because of the A6 closure, had to plan an alternate route for the drivers. The walk started with a pleasant path along the Pennine Way, before the steep ascent of Jacob's Ladder, at the top of which the photo was taken. We weren't sure why some of the stones were painted pink! At the top of the Ladder, we ascended diagonally to walk along Kinder Edge, with its amazing collection of oddly shaped rocks and its deep gullies going down to the valley below. The views were excellent. The path eventually led us to a Rock formation known as Ringing Roger, where we stopped for what is known as "tiffin" and then it was a steep knee trembling descent back to Edale. The weather was good in the morning but heavy showers in the afternoon meant that full waterproofs were needed. We did get back in the dry to negotiate the road closures once again back to Formby. Thanks to George and Joanne for a lovely walk in a beautiful area.



## Liverpool School of Tropical Medicine



### ***Authors Peter and Jean Kehoe.***

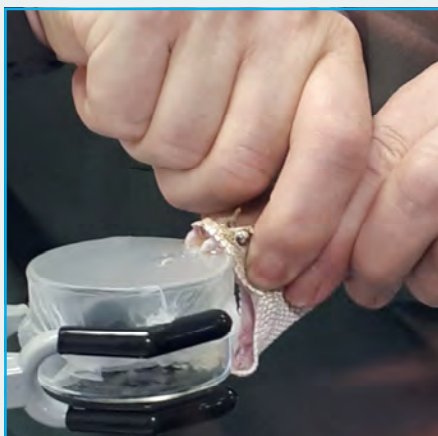
Members of the **Science Group** made a visit to the Liverpool School of Tropical Medicine (LSTM), Pembroke Place, Liverpool. We were warmly greeted by our host for the visit, Dr Elli Wright, Public Engagement Manager, Communications Team. We were generously provided with refreshments, given a brief history and an introduction to the work they undertake as well as being shown some of their interesting archive materials.

LSTM was the first institution in the world dedicated to research and teaching in tropical medicine. It was founded in 1898 by Sir Alfred Lewis Jones, a prominent local ship owner. At the time, Liverpool being a major port city, with extensive international trade, including to regions such as West and Southern Africa, the number of patients in the region admitted to hospital with tropical diseases soared. Recognising the need for a solution to this problem, Jones, together with a number of fellow business men and health professionals, pledged an annual donation of £350 for three years to promote the study of tropical diseases. When Alfred Lewis Jones died in 1909 he left a large bequest to the school. Thanks to this and other donations that it received, the school was able to set up its own laboratory and teaching premises in Pembroke Place, separate from the University of Liverpool.

Amongst the early pioneers of the school was Ronald Ross who was appointed as the school's first lecturer in Tropical Medicine and became the first British recipient of the Nobel Prize in Physiology or Medicine for his work on malaria transmission. We were shown a replica of his award medal (the original being in London to where he subsequently moved). Other pioneers were Joseph Dutton who discovered one of the causes of sleeping sickness and Harold Thomas who developed the first effective treatment for the disease.

The School is a now higher education institution with degree and post graduate awarding powers and is a registered charity. As a teaching institution, it attracts more than 600 students from 68 countries, from PhD research and Masters programmes to a range of professional courses. It works in partnership with health ministries, universities and research institutions worldwide to train the next generation of doctors, scientists, researchers and health professionals. The school now has a research portfolio of over £220 million, with funding from organisations such as the Bill & Melinda Gates Foundation, Wellcome Trust and UK Government Department for International Development. LSTM also provides public pre- and post travel clinical services. LSTM conducts research in the following 6 themes; neglected tropical diseases, resistance research & management, lung health & tuberculosis, malaria & other vector borne diseases, applied health and maternal & newborn child health.

We did a short tour of the buildings, including the original building dating from 1920 and its laboratory, now set up for teaching with 100 microscopes on the benches. Then to the Venom Unit that houses the largest and most diverse collection of tropical venomous snakes in the UK. The Unit leads pioneering research into a universal anti-venom and to improve snakebite treatment. They extract venom from their snakes at regular intervals and this is immediately frozen and is used for anti-venom production and for therapeutic and basic science research. We were able to witness venom being extracted from two



African horned desert vipers, I am happy to say from behind the safety of a viewing window into the laboratory! We were then given 3 presentations on some the School's fascinating current work programme:

- Research into mosquito behaviour, being done in conjunction with Warwick University. They showed graphics that tracked mosquito movements above a sleeping person, and the effectiveness of mosquito nets impregnated with anti-insecticide.
- Research into pre and post-natal mother and child care to reduce the high mortality rates in some of the world's poorest countries, and have developed and provide training courses to midwives from those areas, using simple, but effective, low cost, low tech nursing aids.
- Ongoing research into sleeping sickness and ways to fight the disease.

We were able to ask as many questions as we wanted, answers to which were given with enthusiasm and professionalism.

All in all this was a wonderful, fascinating and informative visit which was enjoyed by all.

## Groups News

The Groups' Secretary is not available at present. E-mails are being diverted to the Chairman and Secretary who should be contacted in the first instance about Group issues. If you wish to join a group that has no vacancies, please e-mail or speak to the Chairman or Secretary.

**Boules:** It has been suggested that a second Boules Group should be set up to play on Wednesday afternoons at 2:00pm at Formby Pool. Please email the Group Secretary if interested.

**Bowls Group** meets every Tuesday at 1:45pm in Formby Park, ready for bowls activity at 2:00pm. Vacancies exist for novices or experienced players. Introductory tuition is given to all new bowlers. The green fee for each afternoon is £2.50 per person, or £30.00 for the whole season. You will be very welcome, and will benefit from the fresh air, the exercise, and making new friends. Contact [doldon@btinternet.com](mailto:doldon@btinternet.com) for further details. Please note suitable flat soled shoes must be worn on the bowling green.



**Chess For Beginners** introduces beginners to Chess, or helps members improve their play. For further information please contact Ray Derricott on 876661.

**Folk Group** will be entertaining members with their highly successful musical dramalogue the "Bill Tasker" show at the forthcoming monthly November meeting and are also planning to tour the show locally this autumn. They plan to perform a new show about Thomas Fresh early next year. Freshfield was named after this highly colourful mid-19th Century character who worked for Liverpool Council as the "Inspector of Nuisances" and grew asparagus on his fields behind Freshfield Station. Please contact Group Leader, David Davies, tel: 875563 or e mail [davkar@tiscali.co.uk](mailto:davkar@tiscali.co.uk) for information.



**Gardening Group 1** meets on the 2<sup>nd</sup> and 4<sup>th</sup> Fridays of the month from 10:15am – 12:15pm to discuss a wide range of issues, including garden problems, topical jobs, propagation and to swap plants. Occasional visits to other gardens may be arranged. For more information please contact Mike Belshaw on 874940.

**German For Anyone:** Robin Hawthorn has volunteered to lead a Group for anyone wishing to learn, improve or just practice their German. Contact 808227 or e-mail: [5thofficer@formbyu3a.org.uk](mailto:5thofficer@formbyu3a.org.uk) for details.

**Poetry Appreciation:** A new group is forming. Members will bring along 2 poems based on a topic the group has chosen previously. There will be an opportunity to

read the poems aloud and for everyone to join in a discussion about each one. Topics will be very varied in scope. No knowledge of poetry is needed, just an enthusiasm to learn and join in. The Group will meet monthly, the day and time will be agreed by members at the initial meeting. If you are interested in joining this group, please contact: Linda Sharratt, [indigo4943@gmail.com](mailto:indigo4943@gmail.com) or telephone 878232.

**Ukulele Group** meet at The Fernley Centre, St Joseph's, Blundell Avenue, on Saturday mornings from 10 -11:30 and people are very welcome to join us, whether beginners or experienced musicians. Please contact Pat Harwood on 877047.



**Vacancies:** There are also vacancies in the following groups: Art, Bird Watching, Boules, Bowling, Bridge Groups 1, 3 & 22, Cycling, Floral Art, French, Gardening Group 3, Guitar, Golf, Knit and Natter, Lunch, Needlecraft, Science, Scottish Dancing, Swimming, Table Tennis, Walking Group 2 and Whist.

Your **yellow 2019 membership card should be shown** at all meetings.

**To All Group Leaders:** Just a reminder that every Group has its own 'information page' on the Formby U3A website which is accessed by clicking on the Groups tab at the top of the page and then clicking on the alphabetical listing of groups. Some of these pages seem to need updating. Could all Group Leaders please check their page and e-mail any additions or amendments to the Group Secretary.

**Group Reporting:** A reminder that we need to include groups income and expenditure in our results from 2019. Many groups do not need complete monthly reports because they either don't have any income and expenditure or amounts are very small (less than £100 per year) or the monies in and out occur on the same day. However these groups need to submit an annual statement to the Treasurer stating why they do not need to report – if you haven't already done so would you email the Treasurer with this information please ([Treasurer@formbyu3a.org.uk](mailto:Treasurer@formbyu3a.org.uk)) or send a letter to Formby U3A, PO Box 216, Liverpool, L37 1XQ, or speak to the Treasurer at the monthly coffee morning.

If your group does have income and expenditure and you're not already reporting, would you contact the Treasurer who will talk you through the straight forward requirements.



## Forthcoming Outings Group

**Author, Ann Blackman, Phone 871127.**

**Outings are open to all *paid up* members of the U3A.** All we ask is that you have the ability to get on and off the coach independently. We cannot be responsible for providing assistance. The coach can accommodate mobility aids which are kept in the luggage compartment on the bus.

Owing to increased demand, we cannot reserve tickets: **Tickets will be allocated on a first come and paid for – first reserved basis.** A separate cheque is required for each outing and ***it is essential that members include their telephone number with each booking.*** Several cheques have been received with no information and I have struggled to identify what they are for. If no contact details are provided, I am unable to contact people when outings are fully booked.

Bookings and information are available at U3A monthly meetings, or coffee mornings. Alternatively please send a stamp addressed envelope to: Ann Blackman, 9 River Close, Formby, Liverpool L37 6DJ, enclosing a separate cheque for each outing made out to ***Formby U3A Outings Group***, having your name, address and telephone number ***on the back.*** Whilst Ann can also be contacted by e-mail at: [outings@formbyu3a.org.uk](mailto:outings@formbyu3a.org.uk) bookings will not be accepted by e-mail.

**Thursday Oct 17<sup>th</sup> Salmesbury Hall tour and Calf's Head.** Tickets £18.00 include return coach journey, morning coffee & biscuits at Salmesbury Hall, followed by a guided tour. We then travel to The Calf's Head, one of your favourite venues, for an excellent & late lunch which is also included in the price. Depart Cross Green 9:00am.

## Forthcoming Music & Theatre Events

**Author: Eileen Jones.**

These events are open to all paid up U3A members. Can I please remind you to book tickets as early as possible, to avoid both your disappointment and our financial loss on the event. We have to pay for the tickets some months in advance. It is extremely helpful if you pay for tickets when the initial booking is made. Please write the event name and your telephone number on the back of the cheque. If you cannot attend an event let us know as soon as possible and we will attempt to sell your ticket to someone on the waiting list. ***The coach usually leaves The Cross House bus stop at 6:15pm. Prices include ticket and transport.*** Any variation on these details will be specified with the event detail.

**Thurs 28<sup>th</sup> Nov., “The Nutcracker,”** Liverpool Empire. An English National Ballet classic, it is danced exquisitely to Tchaikovsky’s magnificent score and tells the delightful story of how a young girl’s enchanted present, a beautiful, wooden nutcracker doll comes to life and leads her on a wonderful Christmas adventure, defeating the evil Mouse King and eventually arriving in a magical kingdom. £40.

Dave Irving can be contacted, if necessary, on 630192.

## Welcome To July & August's New Members

Jean Asbury	Lin Ball	Stephen Bass	Anne Chapman
William Clarke	Cliff Cotsworth	Nicola Foley	James Foulkes
Judy Glynne-Jones	Linda Hanley	David Harrison	Alan Lea
Trevor Ludlow	Susan O'Donnell	Alexandra Reed	Susan Roberts
Barbara Taylor	Alan Tippet	Jim Williams	Sylvia Wood

## To Help You

An **audio version of the Newsletter** is available for members who are visually less able and is distributed through the post. If you are aware of any Formby U3A member who would prefer to receive an audio version of the Newsletter, please let a member of the Committee have their details.

**If you:** have changed your address, telephone number, or e-mail address, or now have an e-mail address and wish to subscribe to electronically receiving the Newsletter, or no longer wish to receive e-mails from Formby U3A, or have an enquiry about your membership card, or subscriptions,

**please contact [membership@formbyu3a.org.uk](mailto:membership@formbyu3a.org.uk)** or write to: Membership Secretary, Formby U3A, PO Box 216, Liverpool L37 1XQ Please remember to include your full name and address, or your membership number.

**Discounts:** Formby U3A has negotiated discounts for members with local firms. A list is on the website, or is available from the Secretary.

## Formby U3A Committee

2019-20

Chairman	Frances Taylor (2017)	577205	<a href="mailto:chairman@formbyu3a.org.uk">chairman@formbyu3a.org.uk</a>
Secretary	Keith Jacques (2018)	870906	<a href="mailto:secretary@formbyu3a.org.uk">secretary@formbyu3a.org.uk</a>
Treasurer	Anne Rodmell (2019)	621835	<a href="mailto:treasurer@formbyu3a.org.uk">treasurer@formbyu3a.org.uk</a>
Membership Sec.	Christine McIlraith (2018)	874787	<a href="mailto:membership@formbyu3a.org.uk">membership@formbyu3a.org.uk</a>
Group Secretary	Ann Knowles (2019)		<a href="mailto:groups@formbyu3a.org.uk">groups@formbyu3a.org.uk</a>
Officers	Linda Smith (2019)		<a href="mailto:1stofficer@formbyu3a.org.uk">1stofficer@formbyu3a.org.uk</a>
Co-opted	Lillian Coop (2019)		<a href="mailto:2ndofficer@formbyu3a.org.uk">2ndofficer@formbyu3a.org.uk</a>
Co-opted	Linda Sharratt (2019)		<a href="mailto:3rdofficer@formbyu3a.org.uk">3rdofficer@formbyu3a.org.uk</a>
Co-opted	Robin Hawthorn (2019)	808227	<a href="mailto:5thofficer@formbyu3a.org.uk">5thofficer@formbyu3a.org.uk</a>

*year appointed to the Committee*

## Monthly Meetings

Are at 2:00 pm in Holy Trinity Parish Hall, the second Wednesday of each month.

**Parish Hall alternative access:** To avoid the front steps, an entrance at the rear of the building can be accessed by following the footpath to the left of the main doors.

**Sept 11<sup>th</sup>**                    **Gill Russell; A stranger in a Strange Land.** Gill lived with her family in Japan for 4 years. The presentation describes some of the cultural aspects of life relating to the hundreds of years when the country had been closed to Western influence and what it was like to see the traditional and modern side by side every time you walked down the road.

**October 9<sup>th</sup>**                    **Ian Cheeseman; My life as a BBC Reporter**

**November 12<sup>th</sup>**                **David Davies & Folk Group; The Bill Tasker Show.**

**Dec 18<sup>th</sup> (3<sup>rd</sup> week)**            **Sing Me Merseyside** perform a wide range of songs.

**Please remember to bring your current YELLOW membership card to all events, including group activities.**

**Coffee Mornings are from 10:30 to 12:00 on Thursday, Sept 12<sup>th</sup>** and each Thursday, the day after the monthly meeting, except August. These are held in the Workshop, Holy Trinity Church, with free coffee and the chance to pick up information about other groups and meet some of your Committee.

**Contributions** informing members of your group and its activities are always welcomed.

Please send contributions to the Editor, e-mail: [newseditor@formbyu3a.org.uk](mailto:newseditor@formbyu3a.org.uk) No e-mail providers guarantee 100% delivery rate and if, 7 days after submitting an article you have not received an acknowledgement one of the e-mail systems failed, so please try again.

Formby U3A Committee would like to remind contributors that it is their responsibility and not the Editor's to check their submitted articles for the grammar, spelling, punctuation etc. Contributors' names should be given.

**Photographs** submitted must be members' own photos as copyright of third parties' photos remains with the owner and the Newsletter cannot publish such photos.

Please ensure that all people shown in photographs are aware that photographs are being taken for inclusion in the Newsletter.

**Previous Newsletters:** are available at: [www.formbyu3a.org.uk/newsletters.html](http://www.formbyu3a.org.uk/newsletters.html)

**The deadline for articles for the next Newsletter is midday Thursday, 19<sup>th</sup> September at the latest.**

**The next Newsletter is due** to be distributed by e-mail and be on the website early October. Paper copies can be collected at the monthly meeting & coffee morning.